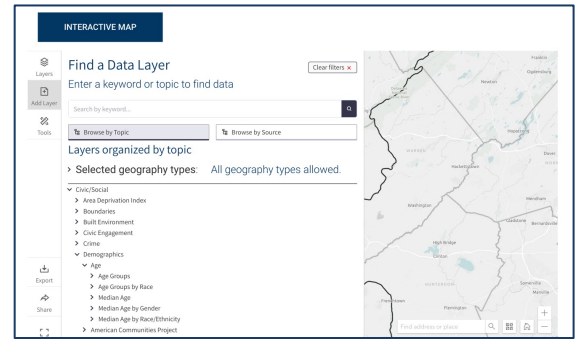
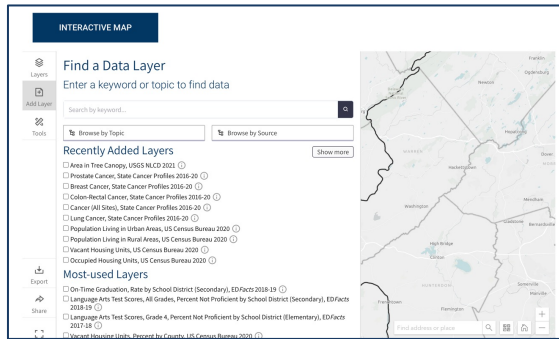


HOW TO MAKE A MAP

The Leonard Parker Pool Institute for Health’s Interactive Map Room allows you to explore and map community-level data at the click of a button.

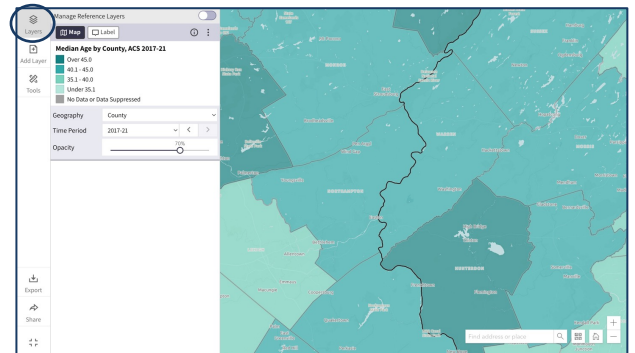
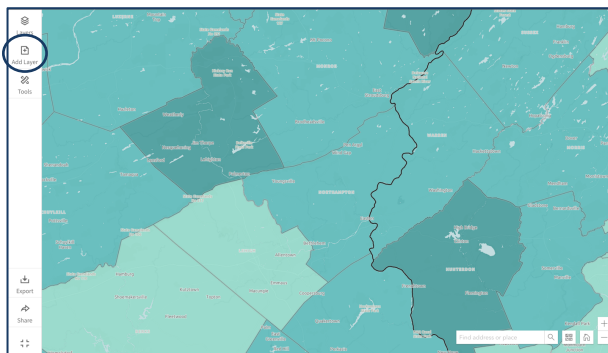
1

STEP ONE: Explore available map layers by entering a keyword in the search bar or by clicking the “Browse by Topic” or “Browse by Source” buttons. You can also browse recently added layers and most used map layers. Check the box next to one or more map layers of interest, then click “Add to Map”.



2

STEP TWO: To hide the layer selection tab and view your full map, unselect the “Add Layer” button. To view the legend for your new map, select “Layers.”



CARES

Center for Applied Research and Engagement Systems
University of Missouri Extension

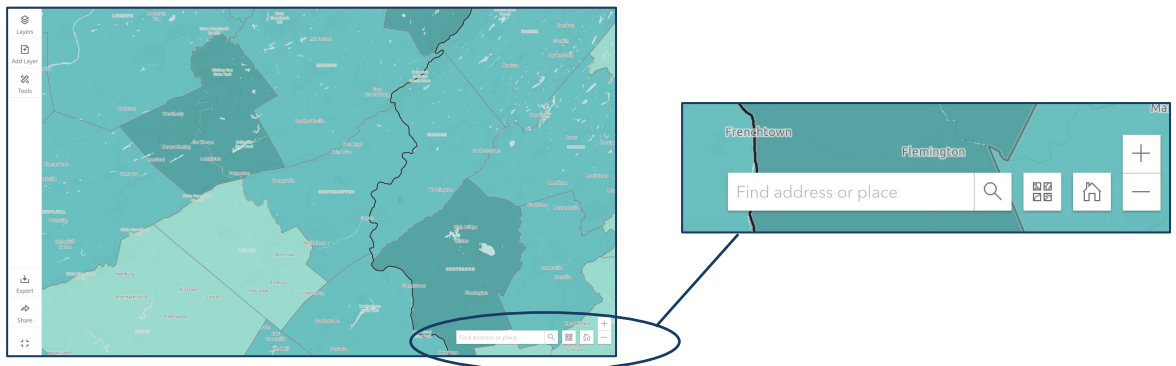
Contact: Jordan Rhodes,
jhwdfx@umsystem.edu

HOW TO MAKE A MAP

The Leonard Parker Pool Institute for Health's Interactive Map Room allows you to explore and map community-level data at the click of a button.

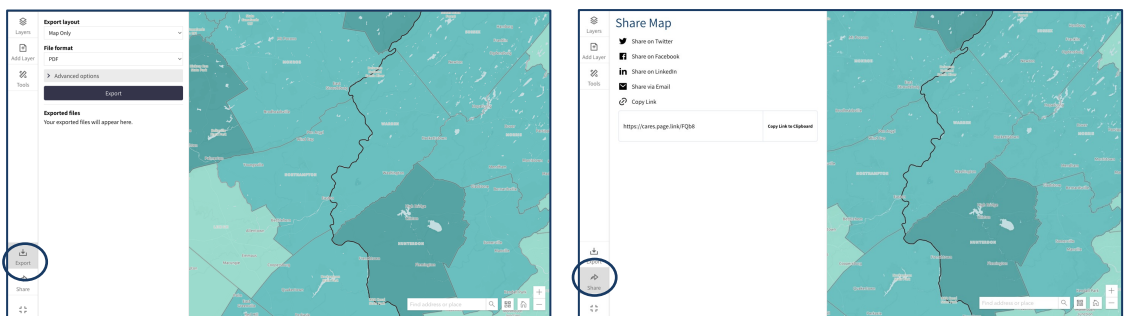
3

STEP THREE: Next, zoom into your community using the plus or minus buttons at the bottom right or by entering a location in the search bar.



4

STEP FOUR: Click the "Export" button on the left menu to download your map. Click the "Share" button on the left menu to share it as a link or via social media.



CARES

Center for Applied Research and Engagement Systems
University of Missouri Extension

Contact: Jordan Rhodes,
jhwdfx@umsystem.edu